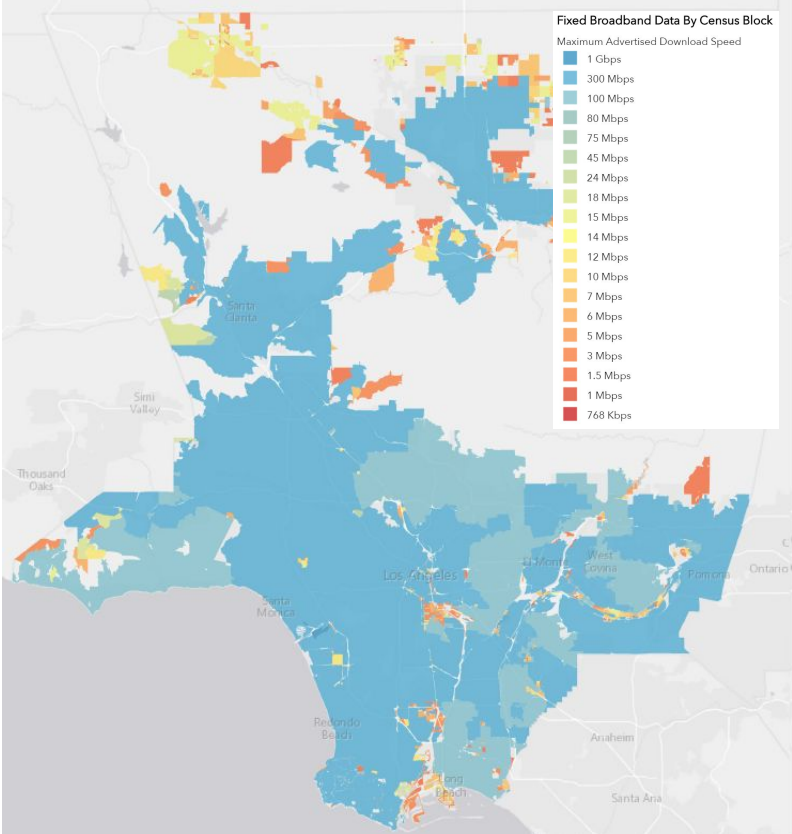
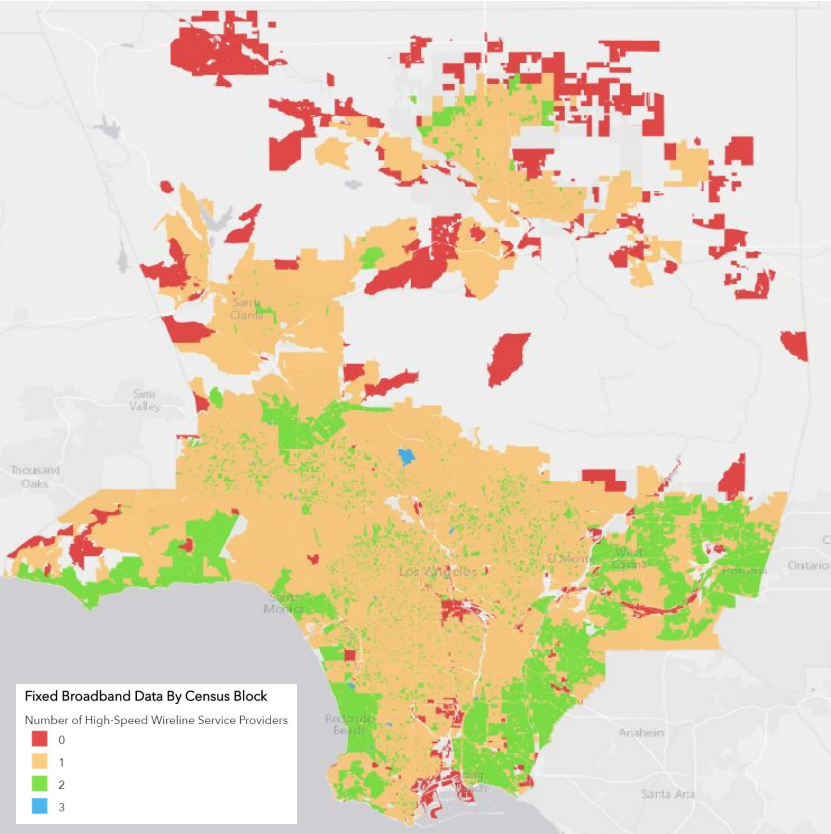


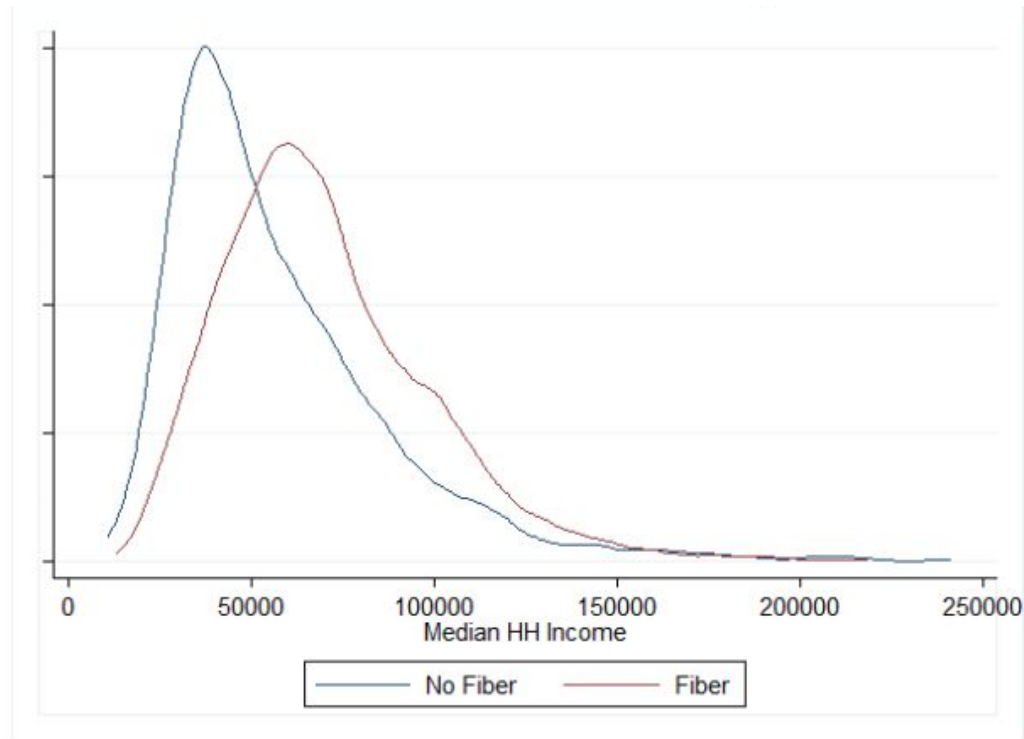
# Mapping Internet Access and Adoption in LA County

What is the current state of  
Internet access & adoption in  
LA County?

# Broadband availability and speed (as of Dec 2015)

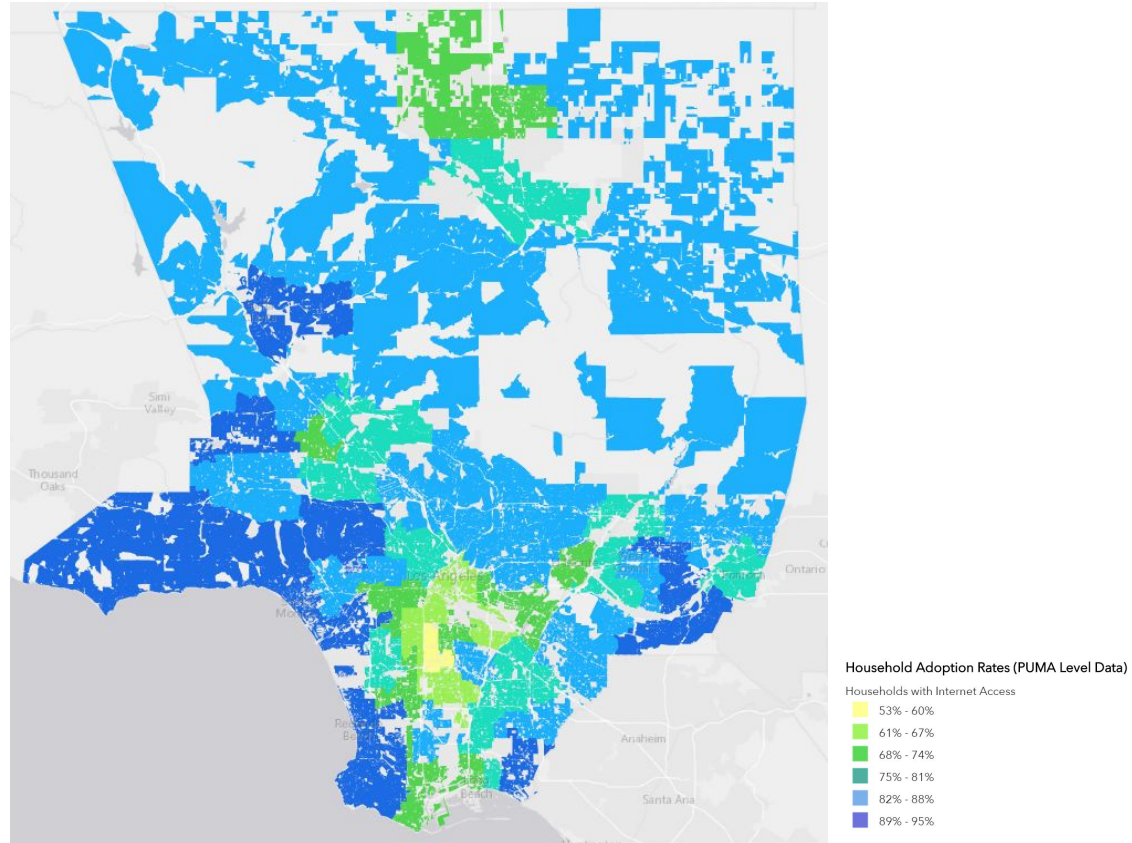


# Fiber vs. No Fiber in LA: Digital Redlining?



Source: CPUC and ACS.

# Household Internet Adoption



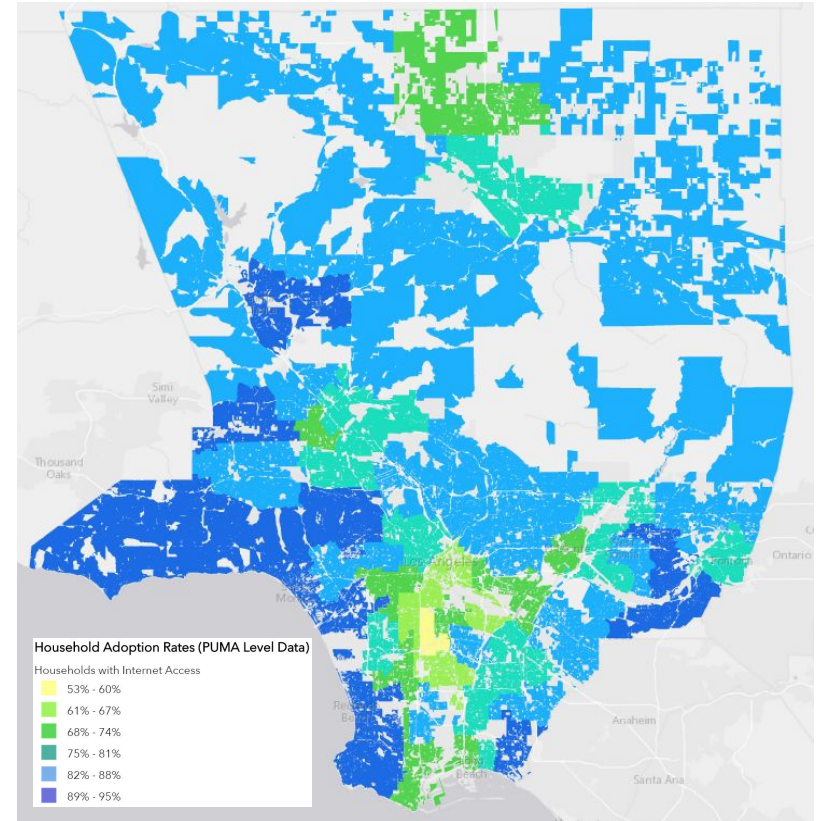
# Explore the tool: <http://arcg.is/2ovTmGi>

## **Map data:**

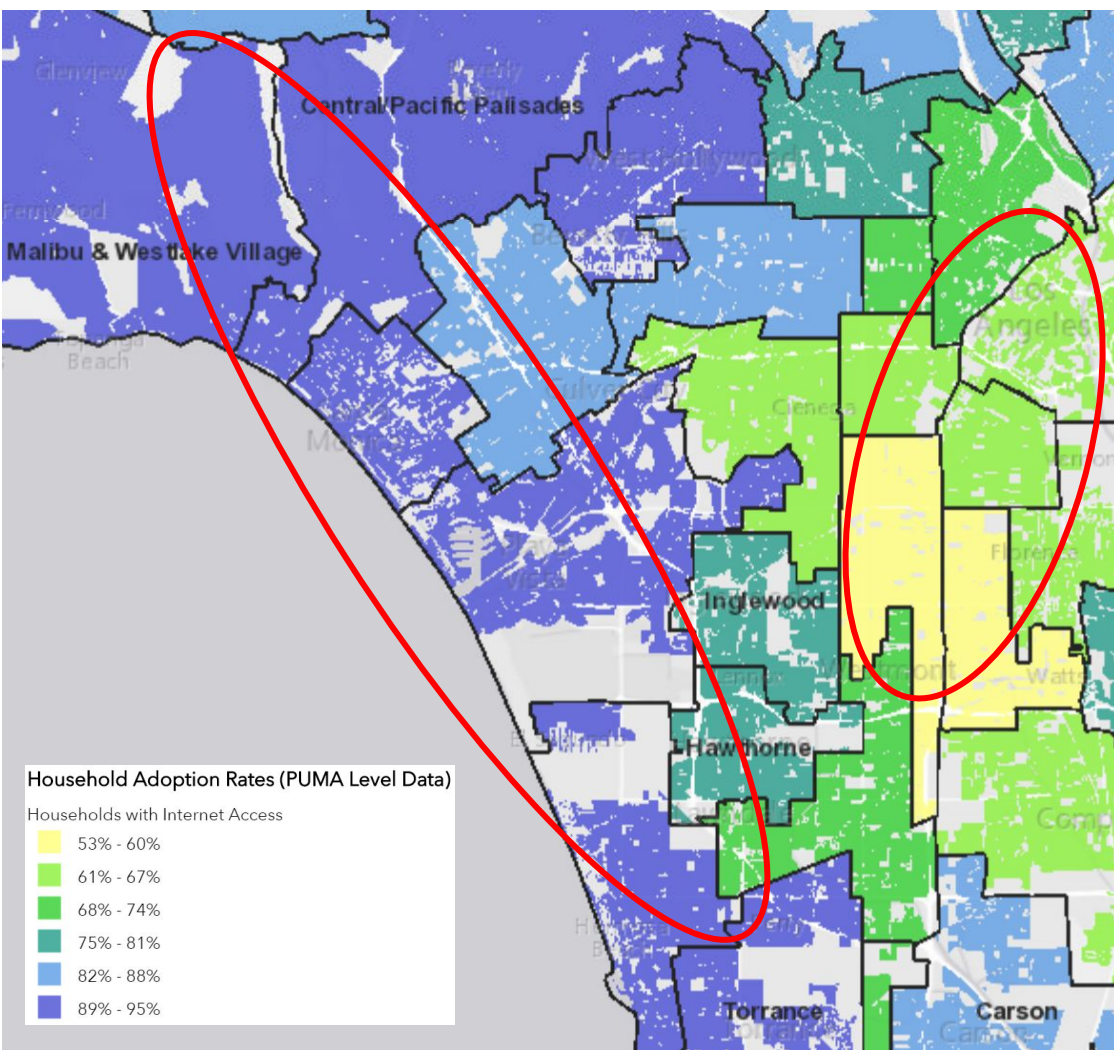
- Internet availability data (download/upload speeds, # of providers) at census block level
- Internet adoption (household Internet access, mobile only, and no access at home) at PUMA level

## **Potential uses:**

- Search by address
- Compare your neighborhood to others
- Side-by-side exploration of trends in data







Household Adoption Rates (PUMA Level Data)

Households with Internet Access

- 53% - 60%
- 61% - 67%
- 68% - 74%
- 75% - 81%
- 82% - 88%
- 89% - 95%

Most connected PUMAs	Has Internet (%)
Central/Pacific Palisades	94.6
Calabasas, Agoura Hills, Malibu, and Westlake Village	94
Redondo Beach, Manhattan Beach, and Hermosa Beach	92.1
Santa Monica	91.1
Covina and Walnut	90.2
Least connected PUMAs	Has Internet (%)
East Central/Central LA & Boyle Heights; Compton	62.9
Southeast/East Vernon	61.6
Bell Gardens, Bell, Maywood, Cudahy, and Commerce	60.9
South Central/Westmont	55.7
South Central/Watts	53.2



# LA County Internet Adoption summary

Variable	Average	Median	Min. to Max. Values (Range)
Has Internet (%)	77.89%	78.9%	53.2 to 94.6% (41.4%)
Mobile only access (%)	5.72%	4.6%	1.7 to 24.9% (23.2%)
No household access (%)	18.77%	17.26%	3.88 to 44.13% (40.24%)

As of 2016, LA County has an estimated population of 10.137 million.

Therefore, an estimated 7.8 million have household Internet access, but almost **2 million** do not.

# Contact Info & Links

## **Hernan Galperin:**

@hernangalperin, [hernan.galperin@usc.edu](mailto:hernan.galperin@usc.edu)

## **Matthew Bui:**

@matthew\_bui, [matthew.bui@usc.edu](mailto:matthew.bui@usc.edu)

## **Tools & Resources:**

- <http://arnicus.org/research/connected-cities/>
- <http://arcg.is/2ovTmGi>